

LAST FLOAT DOWN GLEN CANYON--SEPT/OCT 1962

PART 2...GOOD HOPE BAR TO HOLE IN THE ROCK

Edna Fridley was a good friend of the canyon country of southeast Utah for more than 30 years. Every year she returned to the slickrock from her home, back east, to wander and explore what was then one of the most remote and isolated parts of the United States.

In the fall of 1962, Edna set off on her last trip down Glen Canyon. The dam, 150 miles downstream, was almost complete. Within months the Bureau of reclamation would close its diversion tunnek and stop the free flow of the Colorado River.

Edna had been invited to join a party of friends to celebrate Harry Aleson's wedding, which was to happen during the trip. She flew to Salt Lake City, then rented a car to Page, Arizona via Zion National Park. At Page, after checking in at the Page Boy Motel, she arranged a flight to the dirt airstrip at White Canyon.

She took thousands of photographs of her pack and river trips with legendary guides Ken Sleight and Harry Aleson. But she also kept journals, often scribbled in small spiral notebooks. Here are excerpts from that trip— Part 1 of Edna's last journey down Glen...and, of course, these amazing, never-before-seen photos..JS



Words & Photographs by
EDNA FRIDLEY



“Heard Harry whistling, walk’g around rocks. said he’d found Hite’s name. This I must photograph. Heard Dock so will quit writing---Took photo of Hite’s name and date. Harry found an arrowhead--Gave it to me---It’s beautiful pink and is perfect.

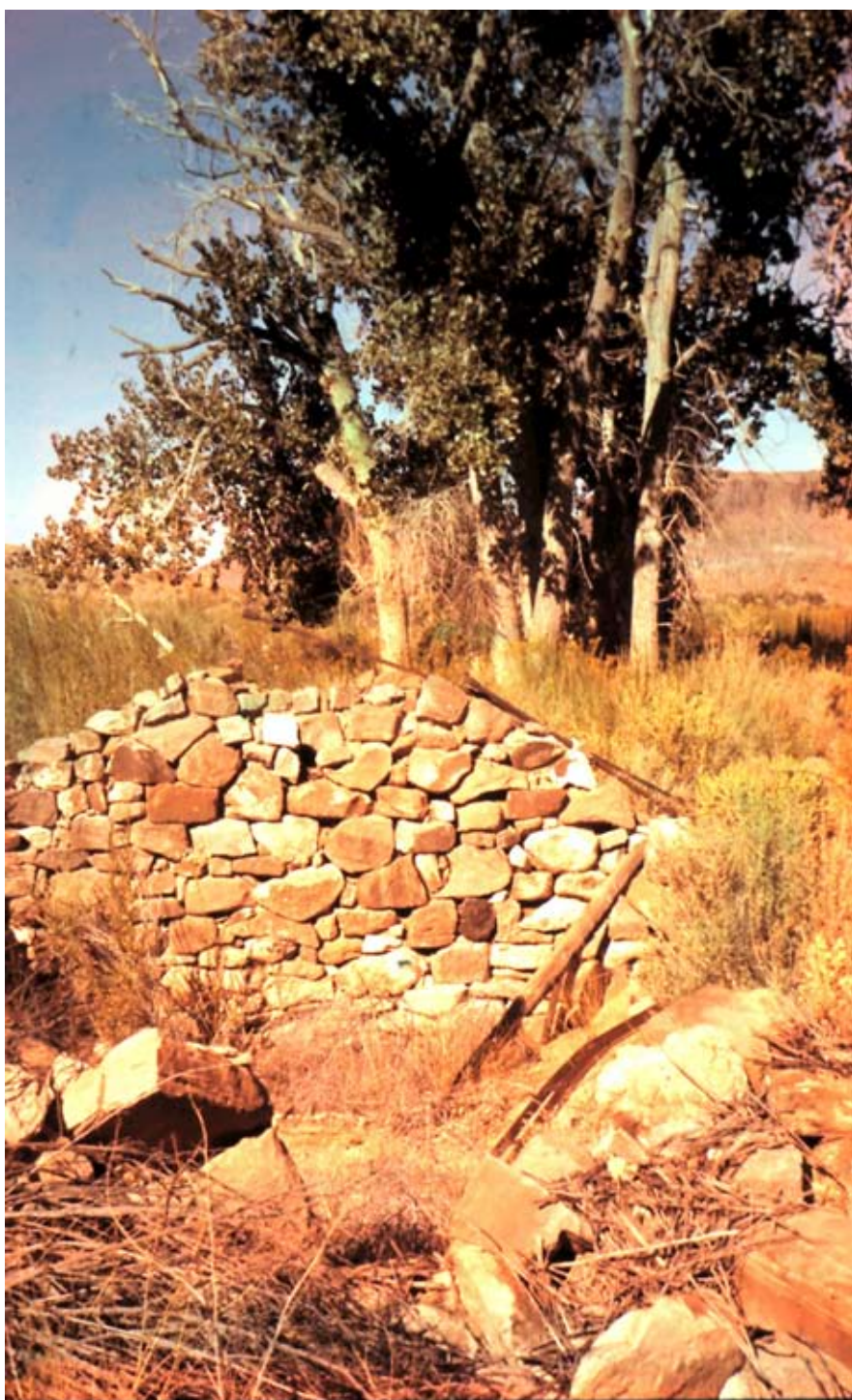
Floated down river a few miles--put in at Mummy Springs...After eating took shovel...surprised a porcupine in oaks near Dock’s and my bed rolls. He took off and so did I. To bed at about 8. Slept well.”





Down to boat---off socks, boots into the water to shove boats off. River receded and we were in muck--icky, icky.

Got boat to another place but had to carry everything. On our way...1/4 miles, green spot up where Dotto had slept..Harry's rubber mattress!



Cabin at Good Hope Bar

Stone mining claim marker

FOR MANY MORE IMAGES AND THE COMPLETE TEXT OF EDNA'S JOURNAL ENTRIES, VISIT THE WORDPRESS VERSION OF THIS ISSUE.



THE CHARACTERS: Harry Aleson, Dock Marston, Bering Monroe...



next page